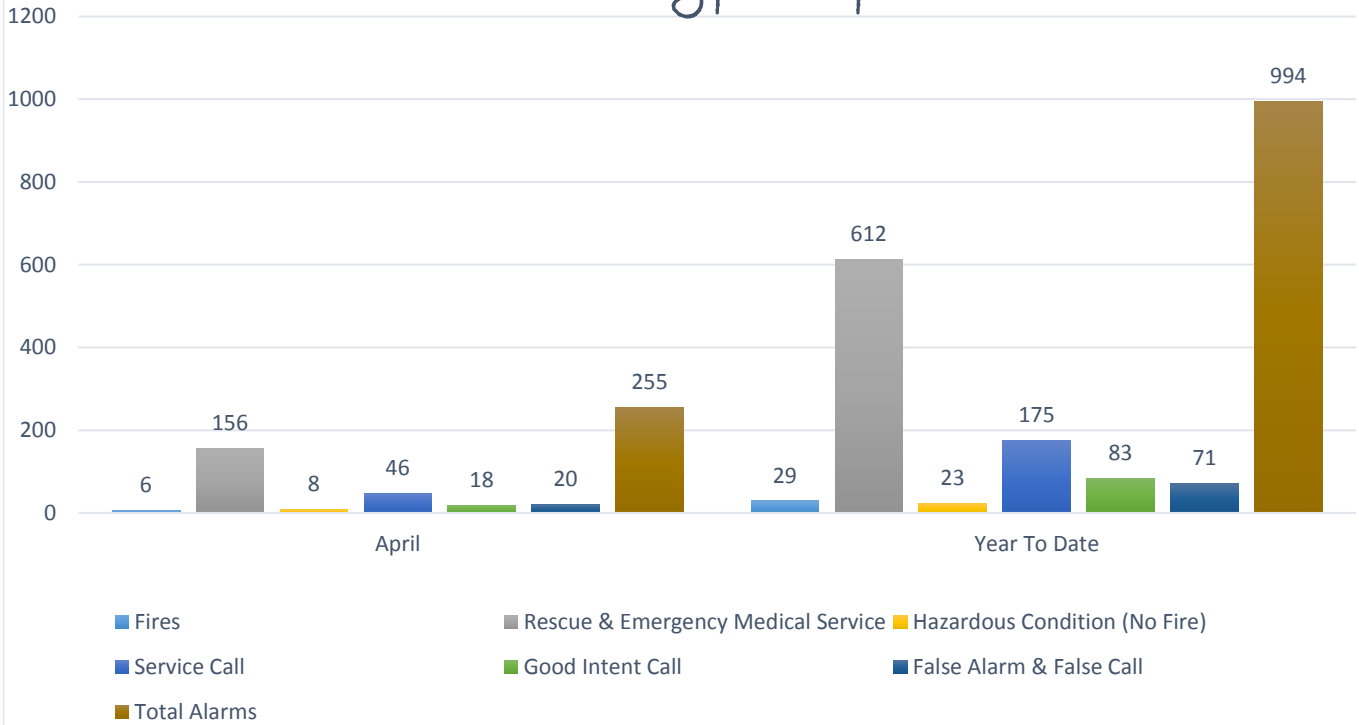




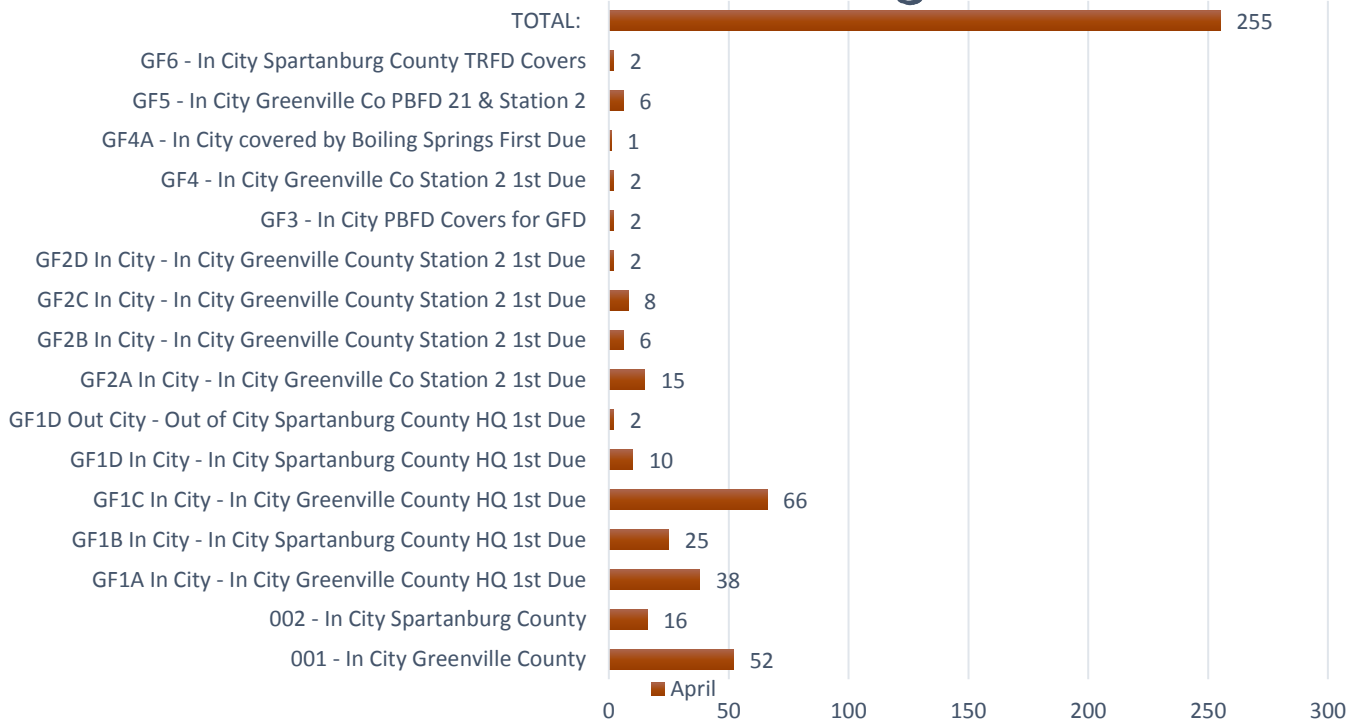
City of Greer Fire Department Year-To-Date Statistics April 2015



Incident Types April 2015



Incident Count by zone





City of Greer Fire Department Year-To-Date Statistics April 2015



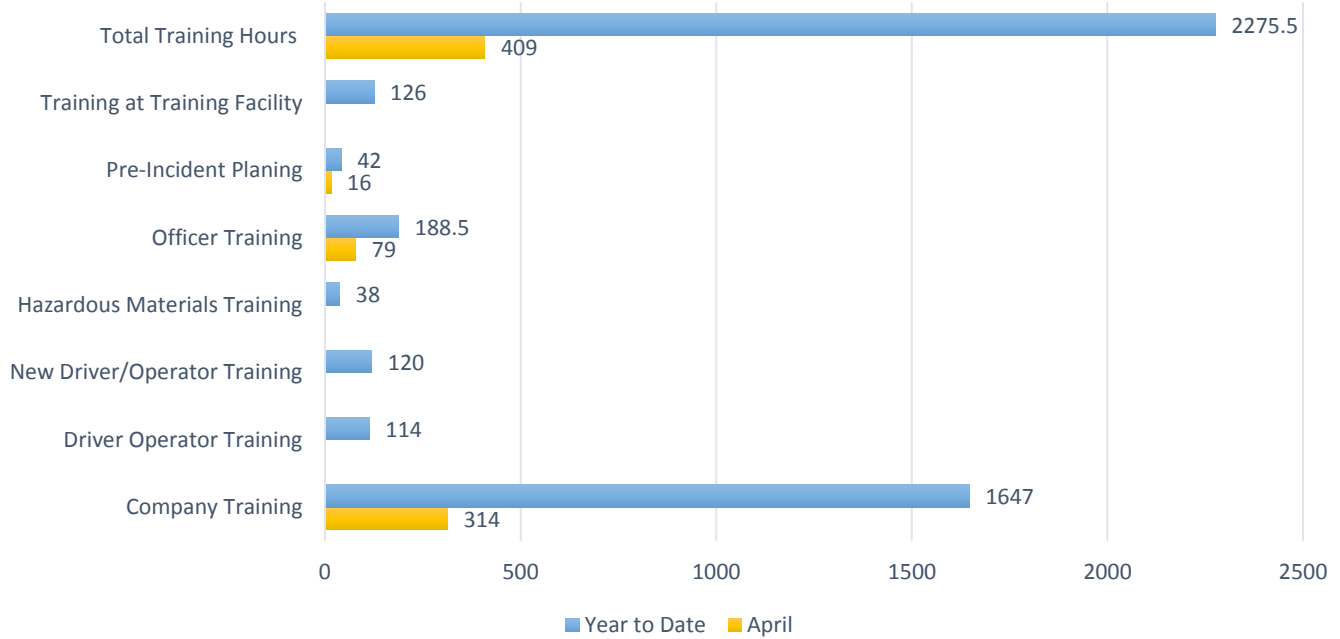
NFPA REPORT FIRES IN STRUCTURES BY FIXED PROPERTY USE (OCCUPANCY)		NUMBER OF INCIDENTS	DEATHS	INJURIES	EST. PROP. DAMAGE
1	Private Dwellings (1 or 2 family), including mobile homes (FPU 419)	4	0	0	\$23,000.00
2	Apartments (3 or more families) (FPU 429)	0	0	0	\$0.00
3	Hotels and Motels (FPU 449)	0	0	0	\$0.00
4	All Other Residential (dormitories, boarding houses, tents, etc.) (FPU 400, 439, 459-499)	0	0	0	\$0.00
5	TOTAL RESIDENTIAL FIRES (Sum of lines 1 through 4)	4	0	0	\$23,000.00
6	Public Assembly (church, restaurant, clubs, etc.) (FPU 100-199)	2	0	0	\$8,500.00
7	Schools and Colleges (FPD 200-299)	1	0	0	\$14,400.00
8	Health Care and Penal Institutions (hospitals, nursing homes, prisons, etc.) (FPU 300-399)	1	0	0	\$0.00
9	Stores and Offices (FPU 500-599)	1	0	0	\$0.00
10	Industry, Utility, Defense, Laboratories, Manufacturing (FPU 600-799)	0	0	0	\$0.00
11	Storage in Structures (barns, vehicle storage garages, general storage, etc.) (FPU 800-899)	1	0	0	\$0.00
12	Other Structures (outbuildings, bridges, etc.) (FPU 900-999)	0	0	0	\$0.00
13	TOTAL FOR STRUCTURE FIRES (Sum of lines 5 through 12)	10	0	0	\$45,900.00
14a	Fires in Highway Vehicles (autos, trucks, buses, etc.) (IT 131-132, 136-137)	6	0	0	\$344,300.00
14b	Fires in Other Vehicles (planes, trains, ships, construction or farm vehicles, etc.) (IT 130, 133-135, 138)	0	0	0	\$0.00
15	Fires outside of Structures with Value Involved, but Not Vehicles (outside storage, crops, timber, etc.) (IT 140, 141, 161, 162, 164, 170-173)	3	0	0	\$0.00
16	Fires in Brush, Grass, Wildland (excluding crops and timber), with no value involved (IT 142-143)	6	0	0	\$0.00
17	Fires in Rubbish, Including Dumpsters (outside of structures), with no value involved (IT 150-155)	3	0	0	\$0.00
18	All Other Fires (IT 100, 160, 163)	2	0	0	\$0.00
19	TOTAL FOR FIRES (Sum of lines 13 through 18)	30	0	0	\$390,200.00
20	Rescue, Emergency Medical Responses (ambulances, EMS, rescue) (IT 300-381)	635	0	0	\$0.00
21	False Alarm Responses (malicious or unintentional false calls, malfunctions, bomb scares) (IT 700-746)	72	0	0	\$0.00
22	Mutual Aid Responses Given	3	0	0	\$0.00
23a	Hazards Materials Responses (spills, leaks, etc.) (IT 410-431)	9	0	0	\$0.00
23b	Other Hazardous Responses (arcing wires, bomb removal, power line down, etc.) (IT 440-482, 400)	14	0	0	\$0.00
24	All Other Responses (smoke scares, lock-outs, animal rescues, etc.) (IT 200-251, 500-699, 800-911)	264	0	0	\$0.00
25	TOTAL FOR ALL INCIDENTS (Sum of lines 19 through 24)	1027	0	0	\$390,200.00



City of Greer Fire Department Year-To-Date Statistics April 2015



Training April 2015



OFFICE OF THE FIRE MARSHAL

